



Jackson Skating Center, Inc.

Rollermagic



Roller Skating Isn't a Sport, It's a Lifestyle
 Check out our regular skating schedule

To All Who Enter ★ ★ ★

Welcome to Jackson Skating Center, Inc

Thank you for choosing to come and skate with us. We have worked diligently to create a safe and healthy environment to comply with CDC and State Covid-19 Requirements.

[Read More](#)



Why Visit Us ★ ★ ★

Our facility features the following qualities.

- ★ Traditional skate rental
- ★ Full-service skate shop
- ★ Rollerblade skate rental
- ★ Full-service snack bar
- ★ Pay lockers
- ★ Free off-street parking
- ★ Skate lessons, class, and private
- ★ Restrooms
- ★ Climate controlled environment



★ ★ ★ Safety Measures ★ ★ ★

Some of our safety tips and guidelines are mentioned below.

01. Personal Items

Bring your skates or rent skates. Above ankle socks are required to be worn with rental skates.

02. Sanitization

Sanitize hands as you enter and often while you are here. Face masks are optional.

03. Admission Fee

Everyone entering pays admission (no one admitted free) (Except non-skating toddlers, three years and under only). All skating adults entering must sign a waiver/release

04. Table Manners

You must be seated at a snack bar table to drink and eat. When you are finished, clean off the table you used so someone else can use it. Please do not leave food or trash on the snack bar table(s) unattended.

05. Guidelines

We appreciate your cooperation by abiding by our standards to ensure the safety and health of all. We do not offer refunds under any normal circumstances.

06. Distance and Hygiene

6-foot social distancing enforced. Put your trash in the nearest marked receptacle.

Book An Event ★ ★ ★

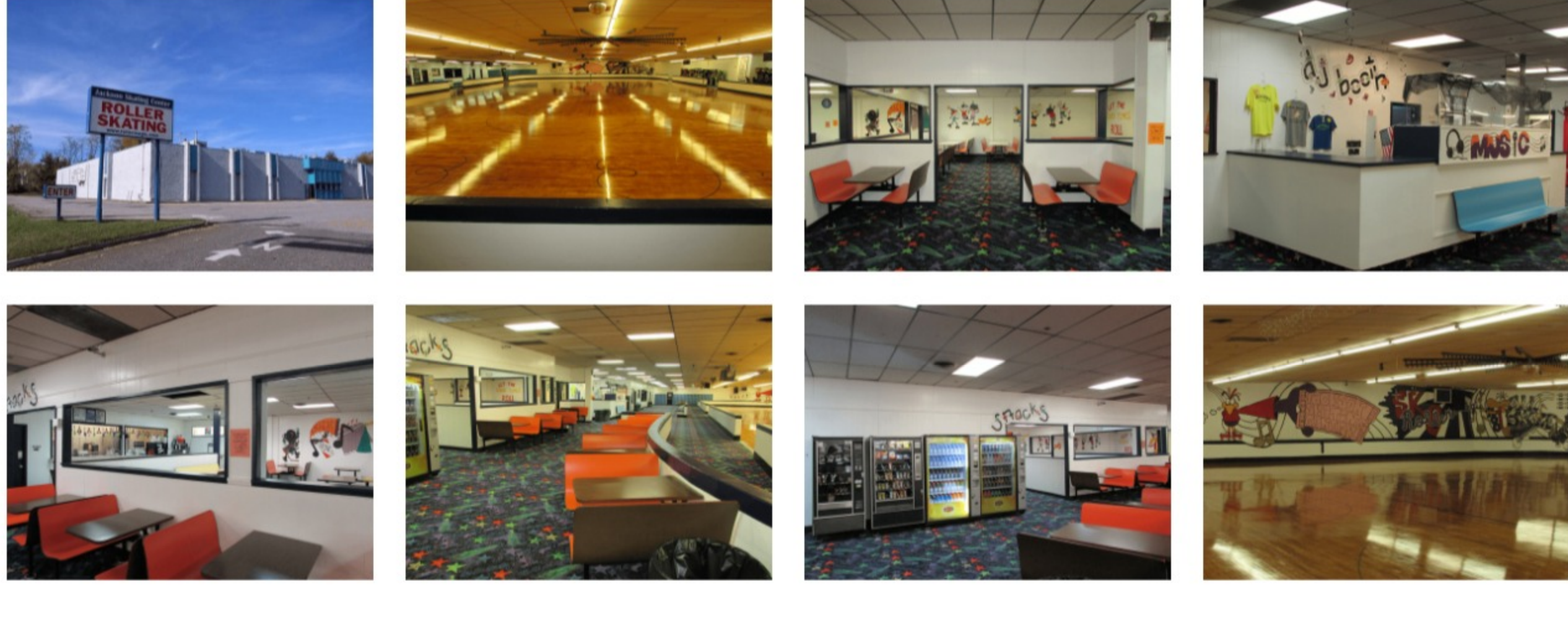
If you are a skating enthusiast, feel free to get in touch with us.

732-363-2222



★ ★ ★ Our Gallery ★ ★ ★

Have a look at our images for more information about our facility



Jackson Skating Center, Inc.

Rollermagic

2270 West County Line Rd., Jackson, NJ 08527
Phone: 732-363-2222

