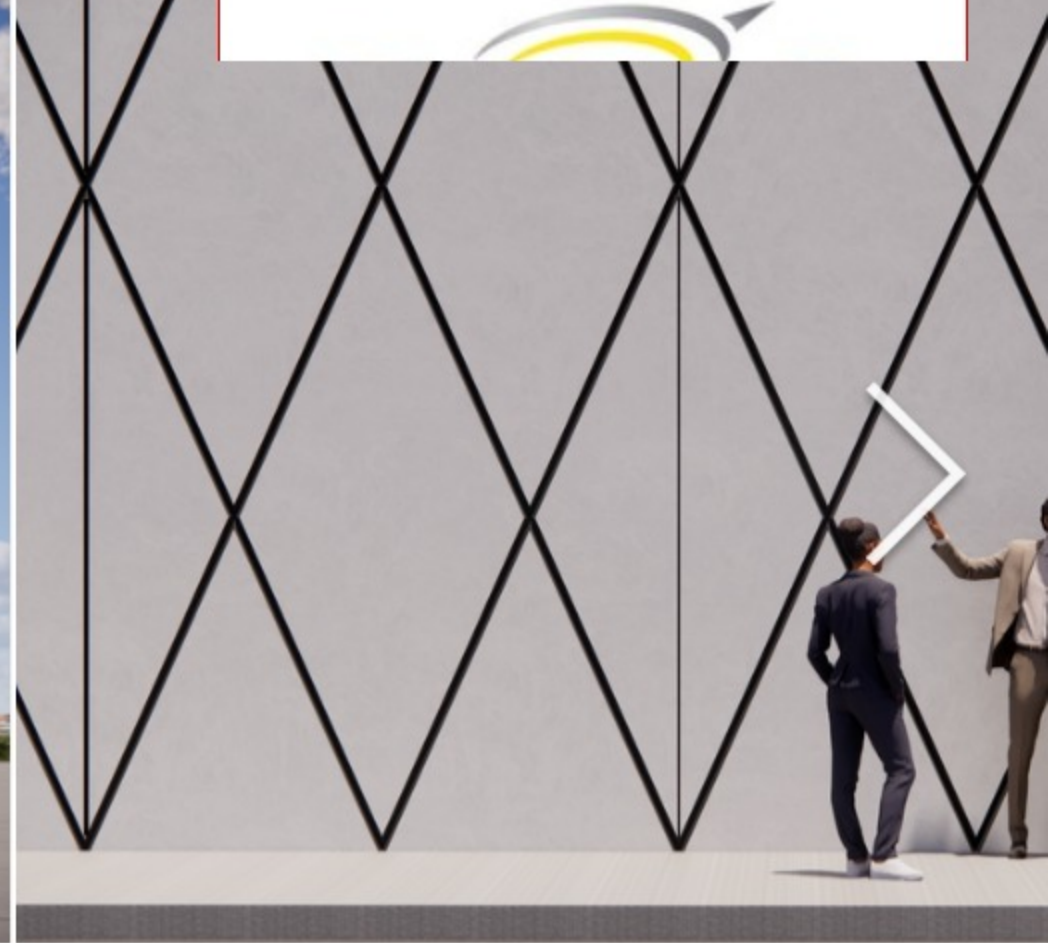


6220 Kansas Ave

40,000 SF | Vacant | 4-Star Industrial Building | Kansas City, KS
| For Sale

[Warehouses](#) / [Kansas](#) / [Kansas City](#) / 6220 Kansas Ave, Kansas City, KS 66111



EXECUTIVE SUMMARY

40,000 SF industrial for sale or lease.

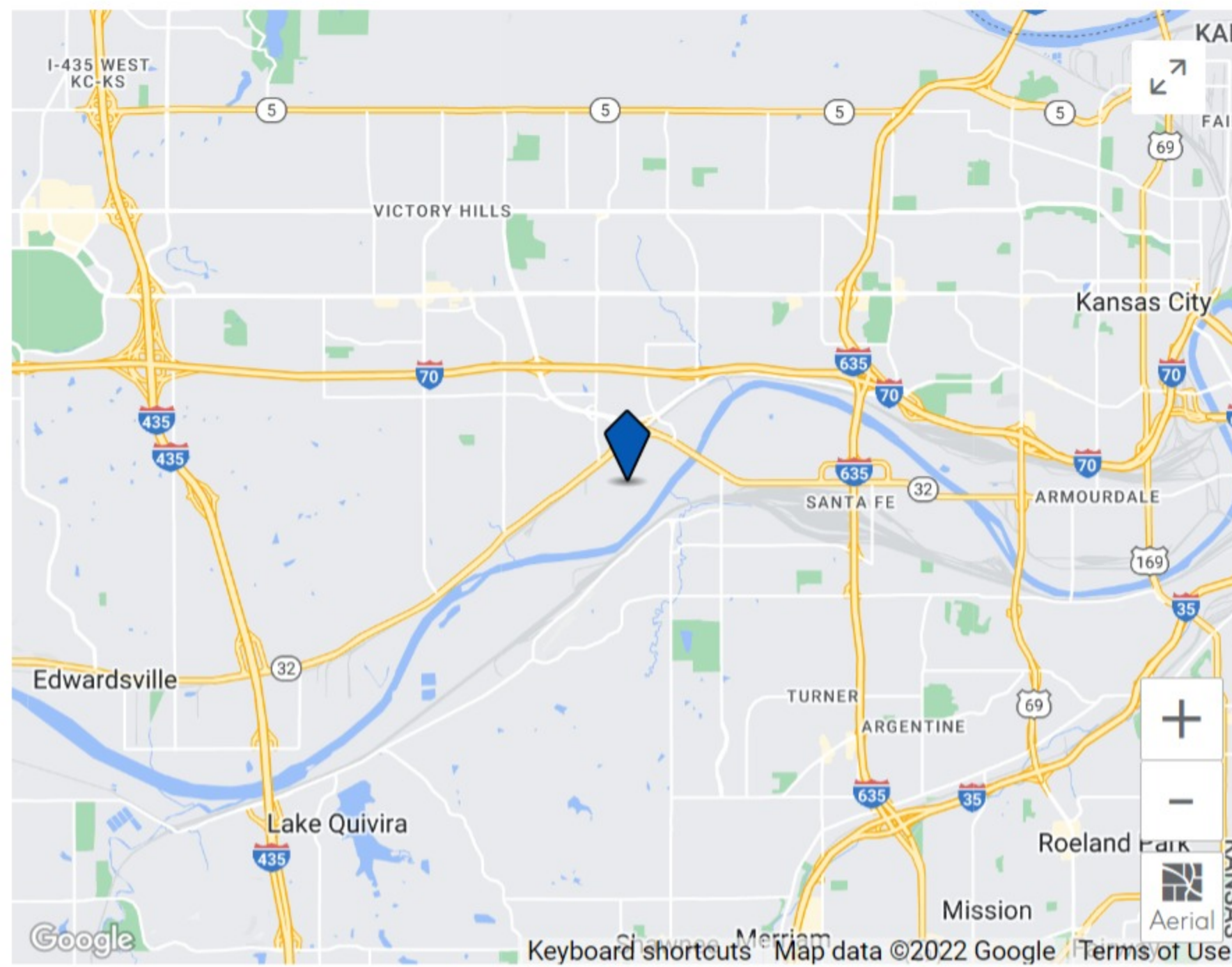
PROPERTY FACTS

Sale Type	Owner User
Property Type	Industrial
Property Subtype	Warehouse
Building Class	B
Lot Size	4.33 AC
Construction Status	Under Construction
Rentable Building Area	40,000 SF
No. Stories	1
Year Built	2022
Parking Ratio	1/1,000 SF
Clear Ceiling Height	20 FT - 32 FT
No. Dock-High Doors/Loading	6
No. Drive In/Grade-Level Doors	1
Opportunity Zone	No

SPACE AVAILABILITY

SPACE	SIZE	SPACE USE	CONDITION	AVAILABLE
1st Floor	40,000 SF	Industrial	-	Nov 2022 ▼

MAP



TRANSPORTATION

✈️ AIRPORT

Kansas City International Airport	33 min drive	23.3 mi
-----------------------------------	--------------	---------

⚓ FREIGHT PORT

Port Milwaukee	634 min drive	575.1 mi
----------------	---------------	----------

🚂 RAILROAD

UP-KANSAS CITY-KS-6201 KANSA	2 min drive	0.3 mi
------------------------------	-------------	--------

ZONING

Zoning Code **KM3 (Kansas Manufacturing)**

YOU MAY ALSO LIKE



10800 Pflumm Rd - Val...
Auction Sale

Listing ID: 26477838 Date Created: 8/24/2022 Last Updated: 9/1/2022
Address: 6220 Kansas Ave, Kansas City, KS

More public record information on 6220 Kansas Ave, Kansas City, KS 66111

The **Muncie-Stony Pt Industrial Property** at 6220 Kansas Ave, **Kansas City, KS 66111** is currently available. Contact Chartwell Realty for more information.

INDUSTRIAL PROPERTIES IN NEARBY NEIGHBORHOODS

- Armourdale Warehouses
- Prairie/Piper-KC-KS Warehouses
- Bonner-Loring Warehouses
- I-435 West KC-KS Warehouses
- Muncie-Stony Pt Warehouses
- Victory Hills Warehouses
- Westside South Warehouses
- North Overland Park Hills Warehouses
- Financial District Warehouses
- Turner Warehouses
- Lowell Place Warehouses
- Argentine Warehouses
- 18th And Vine Warehouses
- Coronado Warehouses
- Morris Warehouses

NEARBY LISTINGS

- 508 S 14th St, Kansas City KS
- 2330 S 14th St, Kansas City KS
- 336 S 42nd St, Kansas City KS
- 6101 Kansas Ave, Kansas City KS